



Ink & Clues



Presents...

**THE GIRL IN THE  
SNOW**

# Thank you for choosing a game from Ink & Clues!

This product is intended for private, non-commercial use. The game may be played at home gatherings, corporate activities, and private events, but it may not be used for commercial events or occasions where participants pay to take part.

All content in this game, including text, story, characters, and structure, is protected by copyright and may not be copied, modified, distributed, or shared in any form without written permission from Ink & Clues.

If you have any questions about the use of our games or want to learn more about our murder mysteries, don't hesitate to contact us at [contact@inkandclues.com](mailto:contact@inkandclues.com).

Thank you for your support - we hope you enjoy an exciting and intriguing mystery experience!



## How to Play - A Detective's Guide

1



### Gather Your Squad (Optional)

If you're feeling sociable, assemble your detective squad for a collaborative experience. Discuss theories, debate suspects, and enjoy the collective thrill of solving the case together.

2



### Dive into the Story

Start reading all the provided material and examine the scattered clues. Immerse yourself in the atmospheric world we've crafted. Read everything but the PDF that contains a clue, and the solution PDF.

### Ponder and Investigate

Analyze the details of the crime and the suspects' motives. Formulate your theories as you go through the evidence. Your goal is to uncover who's responsible for the crime. Make sure to verify alibis for all innocent suspects and connect the clues that point to the perpetrator. The more details you uncover, the more points you'll earn in the end.

3



### Reveal the Answer

If you need a push in the right direction to figure out the answers, open the PDF with the clue. Once you're confident in your conclusions and ready for the final reveal, open the solution PDF. Read the answers there and see if your detective work led you to the correct solution, and calculate your detective score.

4



*And most importantly, have fun!*

## Game Details

<b>Time:</b>	1,5-2 hours
<b>Pages:</b>	40 (total)
<b>Difficulty level:</b>	3.5/5
<b>Gameplay Modes:</b>	Solo, Date Night, Group Play

**Note:** *You will need internet access to play this game. Recommended for ages 18+ due to graphic content and unsettling themes.*

*Latest version released 2026-01-25*



## Homicide Unit

Dear Investigator,

We need your help. We have a case from 2014 that remains unsolved. On December 19, 2014, a 9-year-old girl named Emma Strand disappeared on her way home from school in Falun, Sweden. Her hat was found in a forest along the route.

Two weeks later, her body was discovered in the same area. Despite an extensive investigation, we were never able to determine who was behind the crime.

You are our best hope of finding the truth.  
All the material from the original investigation is attached in this file.

We're counting on you to bring justice for Emma.

Sincerely,  
Mats Ekman  
Criminal Inspector  
Falun Police Department

# POLICE REPORT

**Case:** Missing Person

**Case Number:** 5000-K417681-14

**Filed:** December 23, 2014

**Location:** Falu Elementary School, Falun, Dalarna County

**Reporting Officer:** Mats Ekman, Falun Police

## Incident Summary:

On Friday, December 19, 2014, 9-year-old Emma Strand was reported missing in Falun.

Annika Viklund, a teacher at Falu Elementary School, stated that Emma left the school grounds at approximately 2:25 PM. It's not unusual for Emma to walk home on her own, as she lives nearby and is familiar with the forest path leading to her home.

At around 2:40 PM, a passerby found a red child's winter hat in the forest along Emma's usual route. The hat was collected and later identified by the family as belonging to Emma.

When Emma failed to return home as expected, her mother, Julia Strand, contacted the police later that evening. Emma has not been seen or heard from since.

## Actions Taken

Police initiated search operations in the surrounding area with foot patrols, as well as a forensic examination of the site to secure potential traces in the snow. However, due to the large number of footprints from local residents and passersby, no helpful conclusions could be drawn regarding Emma's movements after the hat was dropped.

The parents, relatives, and local volunteers organized additional searches over the weekend. Interviews have been conducted with school staff, classmates, and residents along Emma's route home. Nearby roads and bus stops were also checked. A tip line has been opened to the public.

## Status

Despite intensive search efforts, Emma has not yet been located. No confirmed sightings of her after 2:25 PM have been verified. The recovered hat remains the only confirmed item linked to Emma after she left school.

The search continues with reinforced resources from the Dalarna Police and volunteer organizations.

---

# Christmas nightmare

## Falun in shock after disappearance

---

**Falun, Sweden. What should have been a season of holiday peace has turned into a nightmare for the Strand family. Nine-year-old Emma Strand has been missing since Friday afternoon, when she vanished on her way home from school.**

Emma was last seen leaving Falu Elementary School around 2:25 PM on December 19. She usually walked home alone along a wooded path, but never arrived. A red hat, later confirmed to be hers, was found on the route shortly afterward.

Despite extensive searches involving police, rescue services and hundreds of volunteers, no further trace of Emma has been found.

*"We are doing everything we can to bring Emma home. The whole community has come together, but with every passing hour the concern grows deeper,"* says Inspector Mats Ekman of the Falun police. Emma's mother, Julia Strand, made a brief statement through tears: *"We just want our daughter back. If anyone knows anything, no matter how small, please go to the police."*



*Emma Strand, 9.*



*Emma never made it home to her family's house in Falun.*

The disappearance has caused concern in Falun in the days before Christmas. Neighbors and parents have joined nightly search efforts, while the school community rallies in support of the family.

Police are appealing to anyone who may have been near Falu Elementary School or the woodland path on Friday afternoon to come forward. Information can be reported at any time by calling 114 14.

# SEARCH PARTY - VOLUNTEERS NEEDED



## MISSING: EMMA STRAND, 9

We are still searching for Emma Strand, who disappeared on Friday, December 19, while walking home from Falu Elementary School.

Meeting point: Sunday, December 21 at 9:00 AM,  
parking lot outside Falu Elementary School

Coordinator: Christoffer Westin

📞 Contact: 072-045 67 89

# POLICE REPORT



**Case:** Body Discovered

**Case Number:** 5000-K417681-14

**Filed:** January 5, 2015

**Location:** Forest near Falu Elementary School, Falun, Dalarna County

**Reporting Officer:** Mats Ekman, Falun Police

## Incident Summary:

On Monday, January 5, 2015, at 08:16 AM, police received an emergency call from a distressed woman living in Falun. She reported that during her morning walk with her dog in a forested area, along the path connecting Falu Elementary School with Emma's home, she had discovered a body. A patrol was dispatched immediately. Upon arrival, officers confirmed that the body matched the description of 9-year-old Emma Strand, who had been missing since December 19, 2014.

## Actions Taken at the Scene

The area was cordoned off, and forensic technicians were called in. The body was photographed in the position it was found, and the location was documented with GPS coordinates. The body was then transported to the National Board of Forensic Medicine for further examination. A statement was taken from the caller.

## Observations

The clothing matched the description previously provided by the family regarding what Emma had been wearing when she disappeared. Her outer jacket is missing. Police attempted to secure possible tracks in the snow; however, due to the high number of people moving through the area, no reliable traces could be linked to the incident. No immediate signs of a struggle were observed at the site.

## Status

The cause of death has not yet been determined. The National Board of Forensic Medicine will conduct an autopsy. The investigation is currently being treated as a suspected homicide.



# AUTOPSY REPORT

Forensic Pathologist: *Dr. Anneli Sjöström*

Filed: *January 7, 2015*

Location: *Forensic Medicine, Falun, Sweden*

Deceased: *Emma Strand, 9 years old*

Discovered: *January 5, 2015, approx. 08:16 AM, forest area in Falun*

## External Examination:

- 1. Redness and hemorrhaging observed around the neck, consistent with applied pressure.*
- 2. Bruising present on the upper arms and thighs.*
- 3. Abrasions around the wrists.*

## Internal Examination:

*Neck tissue shows clear hemorrhaging beneath the skin surface. Injuries to the larynx and soft tissue consistent with significant pressure applied to the neck.*

## Cause of Death:

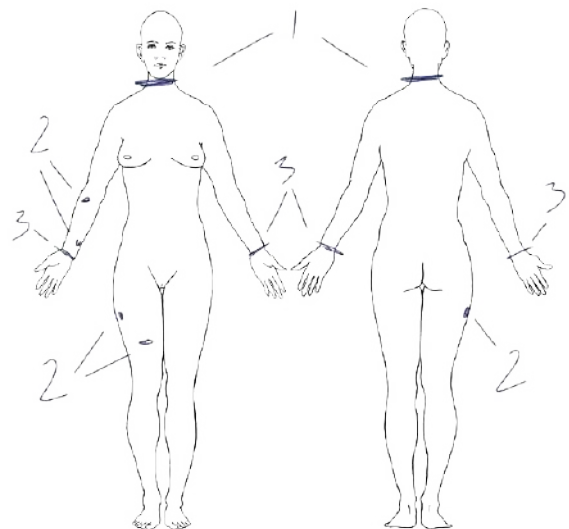
*Findings collectively indicate death caused by strangulation.*

## Additional Notes:

*Signs of malnutrition were observed. Due to low temperatures, decomposition was significantly delayed, making it hard to determine an exact time of death with certainty.*

## Summary:

*Emma Strand died as a result of strangulation. Time of death cannot be precisely established but is estimated to have occurred between January 3 at 8 PM and January 5 at 3 AM.*



---

# Emma Strand, 9, found dead

## Police open murder investigation

---

**Falun, Sweden. The two-week search for nine-year-old Emma Strand has ended in tragedy. On Monday morning, her body was discovered in a wooded area not far from the family's home. Police have now launched a murder investigation.**

A woman walking her dog raised the alarm at 8:16 a.m. after finding the body. The site was quickly cordoned off by police and forensic teams, and the remains were later confirmed to be Emma's.

*"We can confirm that the body found is Emma Strand. The circumstances mean we are treating this as a suspected murder,"* said Inspector Mats Ekman of Falun police.

Emma's family is devastated. Her mother, Julia Strand, told Dalarna Post: *"Life will never be the same. Right now everything is just a cloud. It doesn't feel real."*

Hundreds of volunteers had joined the search during the Christmas holidays, and at Emma's school, teachers and classmates gathered to remember her. Candles and flowers have been placed outside the entrance.

*"We searched day after day. I kept hoping she would turn up alive. For it to end like this is horrible,"* said Per Johansson, 54, who lives nearby.

*"It makes you afraid. I have kids the same age, and you can't help thinking it could have been any child. It feels like the whole sense of safety in town is gone,"* said Sara Lundin, 32.

Police continue to investigate Emma's last known movements. Door-to-door inquiries are underway, and relatives and witnesses are being interviewed. *"We will follow every lead until we know exactly what happened,"* said Inspector Ekman.

The case has also raised concerns among parents in Falun about children walking to and from school alone. The municipality and Falu Elementary School have announced a review of safety routines. *"We must take these concerns seriously and ensure the children feel safe,"* said Christoffer Westin, a teacher at the school.



*Police sealed off the forest area after the body was discovered Monday morning.*



## Interview Report – Falun Police

**Case Number:** 5000-K417681-14

**Date:** January 6, 2015, 10:48 AM

**Interviewing Officer:** Detective Inspector Mats Ekman

### Details of Interviewee:

**Name:** Julia Strand

**Address:** Björkgatan 14, 791 00 Falun

**Date of Birth:** April 12, 1981

**Marital Status:** Lives with Mikael Forsman

**Children:** Emma Strand (deceased), 9 years old

**Occupation:** Nursing Assistant at Stenbro Hospital

**Interviewer:** Julia, we understand this is an incredibly difficult situation. I want to start by thanking you for finding the strength to speak with us today.

**Julia:** I don't even know how I'm supposed to cope... I don't know what to do.

**Interviewer:** I understand. We do need to clarify some circumstances, though. Could you tell me how you've been since Emma disappeared?

**Julia:** It's been hell. I've needed support, but Mikael hasn't been home much lately.

**Interviewer:** Mikael is your partner, correct?

**Julia:** Yes, he's Emma's stepfather. We've lived together for two years now. I don't know if we're going to make it through this.

**Interviewer:** How would you describe Mikael's relationship with Emma?

**Julia:** Mikael is a rather strict person. He thinks children should behave and keep quiet, and he could be hard on Emma at times. She wasn't his favorite, to be honest. She was closer to her father and to me. I think she could sense Mikael's moods.

**Interviewer:** Have you noticed any particular behavior from Mikael recently?

**Julia:** He's been distant lately. He says he's working, but when I ask him to be here, he just sighs... I feel completely broken and so alone.



**Interviewer:** We'll arrange for someone you can talk to. In the meantime, we want to gather as much information as possible. Is there anyone in particular you think might have wanted to harm Emma?

**Julia:** I don't know. I can't think of anyone who would want to hurt Emma. She was such a kind, sweet girl.

**Interviewer:** Have you noticed anything that might be important? Anything Emma herself said or did in the days before she disappeared?

**Julia:** One evening she said she didn't like walking home alone anymore. When I asked why, she just said it felt uncomfortable, but she didn't want to explain further. I had my work schedule to keep, so she kept walking home as usual. I regret so much that I didn't ask more questions.

**Interviewer:** Thank you, Julia. What you've shared is important to our investigation. We will continue to examine everything that may be connected to Emma's disappearance and death.

**Julia:** Oh... she didn't deserve this... my little girl.

# December

# 2014

MONDAY	TUESDAY	WEDNESDAY	THURSDAY	FRIDAY	SATURDAY	SUNDAY
1	2 Emma dentist. 10:30	3 Louisa babysits Emma 2-6	4 parent conf. 5:30	5 late shift 3-10 pm Louisa babysits	6	7
8 Emma at Richards late shift 3-10 pm	9	10	11 Mikael bank meet. 3 pm	12	13	14
15	16 Louisa babysits 2-5	17 night shift (Mikael at home)	18 Louisa babysits 2-6	19	20	21 Cleaning
22 Emma at Richards late shift 3-10 pm	23 Xmas shopping	24 Xmas family	25 Carina	26	27	28
29	30	31 New years at home				

**NOTES:**

- > Optician
- > Xmas presents
- > .....
- > .....



### Interview Report – Falun Police

**Case Number:** 5000-K417681-14

**Date:** January 6, 2015, 11:32 AM

**Interviewing Officer:** Detective Inspector Mats Ekman

#### Details of Interviewee:

**Name:** Mikael Forsman

**Address:** Björkgatan 14, 791 00 Falun

**Date of Birth:** August 19, 1970

**Marital Status:** Lives with Julia Strand

**Children:** None of his own, stepfather to Emma Strand

**Occupation:** Truck Driver at Nordic Freight

**Interviewer:** Mikael, we need to talk about your relationship with Emma. How was your everyday interaction with her?

**Mikael:** Well... she was just a kid, and she wasn't mine. But I tried my best. What has happened is fucking terrible. How the hell could it end like this?

**Interviewer:** I understand. Can you tell me where you were when Emma disappeared on December 19?

**Mikael:** What do you mean? I was at home, I guess. I don't know the exact time. Ask Julia, or the neighbors, or someone else. You should be looking at other people if you want to get anywhere.

**Interviewer:** We're speaking with everyone close to Emma, that's our job. Is there anyone in particular you think we should look into?

**Mikael:** You should check out that neighbor, Freddy. He's creepy as hell. People say they've seen him hanging around playgrounds, staring at kids. And Carina, that mother of Emma's classmate. I don't even get why Emma spent time with her kid. Carina's always jealous, talking shit about anyone who's better off than she is. You should look into her too. Otherwise, I don't know.

**Interviewer:** Thank you, Mikael. We'll note your statements. We'll first be speaking with Emma's father, and then continue to follow up on the leads that come in.

**Mikael:** Yeah, you do that.



## Interview Report – Falun Police

**Case Number:** 5000-K417681-14

**Date:** January 6, 2015, 11:32 AM

**Interviewing Officer:** Detective Inspector Mats Ekman

### Details of Interviewee:

**Name:** Richard Strand

**Address:** Kopparvägen 22, 791 00 Falun

**Date of Birth:** March 15, 1974

**Marital Status:** Divorced from Julia Strand

**Children:** Emma Strand (deceased), 9 years old

**Occupation:** Owner & CEO, Strand Construction

**Interviewer:** Richard, we understand this is an incredibly difficult time for you. But we need to go over some questions. Can you start by telling us about your relationship with Emma this past fall?

**Richard:** She lived with me every other week. She was always happy to come over and we got along really well. But lately, I noticed a change. She seemed more withdrawn, not as cheerful as before.

**Interviewer:** What kind of change did you notice?

**Richard:** She was quieter than usual, kept to herself more. And sometimes I saw bruises on her. When I asked about them, she said she had fallen. I brought it up with Julia, but she always insisted it was from school. Playing, gymnastics, that sort of thing.

**Interviewer:** Do you have any particular suspicions?

**Richard:** Isn't it obvious? It's Mikael. I've seen the way he talks to Emma, the way she shrinks around him. And then the bruises... I can't prove it, but I'm convinced he had something to do with this.

**Interviewer:** How would you describe your own relationship with Mikael?

**Richard:** Terrible. I've never liked him, and he's never liked me. He probably thinks I interfere too much.

**Interviewer:** And what about Mikael's relationship with Julia, any impressions there?

**Richard:** I don't know the full picture, but Julia has sounded exhausted with him. She's mentioned he's away a lot. Honestly, I don't think their relationship is holding up very well.

**Interviewer:** Thank you, Richard. Is there anything else you'd like to add?

**Richard:** Just that you shouldn't overlook what's right in front of you. Please, take a serious look at him.

## Company Record – Strand Construction

**Company Name:** Strand Construction

**Registration Number:** 559312-8471

**Date of Registration:** March 3, 1988

**Legal Form:** Limited Company

**Registered for:** VAT, Corporate Tax, Employer Contributions

**Headquarters:** Falun, Sweden

### Financial Information (Fiscal Year ending August 2014):

- **Net Revenue (Turnover):** SEK 914,263,000
- **Profit After Financial Items:** SEK 80,641,000
- **Net Profit:** SEK 27,694,000
- **Total Assets:** SEK 269,657,000
- **Equity:** SEK 73,839,000
- **Employees:** 140

### Industry Classification (SNI):

- 41200 – Construction of residential and other buildings
- 43999 – Other specialized construction and civil engineering activities

### Executive Management and Board:

- **CEO (Managing Director):** Richard Anders Strand
- **Chairman of the Board:** Per-Olof Hammar

**Source:** Extracted and translated from official Swedish corporate records.

**From:** Richard Strand richard.strand@strandbygg.se  
**To:** Company Register [Auto-Reply]  
**Cc:** Per-Olof Hammar per-olof.hammar@strandbygg.se  
**Date:** Friday, 19 December 2014, 2:32 PM  
**Subject:** Removal of Chairman of the Board — Strand Construction

Hello,

I hereby notify you that Strand Construction (Reg. No. 559312-8471) has resolved to relieve Per-Olof Hammar of his duties as Chairman of the Board, effective immediately. This decision follows findings of misconduct and a loss of confidence.

As owner and CEO, I am executing this decision in accordance with the company's articles of association. A replacement chairman will be formally reported in due course.

Kind regards,  
Richard Strand  
CEO, Strand Construction



**From:** Per-Olof Hammar per-olof.hammar@strandbygg.se  
**To:** Richard Strand richard.strand@strandbygg.se  
**Date:** Friday, 19 December 2014, 2:38 PM  
**Subject:** Re: Removal of Chairman of the Board — Strand Construction

What are you doing, Richard? We were supposed to talk about this!

/Per-Olof



**From:** Per-Olof Hammar per-olof.hammar@strandbygg.se  
**To:** Richard Strand richard.strand@strandbygg.se  
**Date:** Friday, 19 December 2014, 2:44 PM  
**Subject: Re:** Re: Removal of Chairman of the Board — Strand Construction

Your office is empty where are you? Afraid to face me?? The least you could do is look me in the eye. Fuck you Richard! I'll make your life a living hell



### Interview Report – Falun Police

**Case Number:** 5000-K417681-14

**Date:** January 7, 2015, 09:12 AM

**Interviewing Officer:** Detective Inspector Mats Ekman

#### Details of Interviewee:

**Name:** Fredrik Andersson

**Address:** Björkgatan 23, 791 00 Falun

**Date of Birth:** September 4, 1972

**Marital Status:** Single

**Children:** None

**Occupation:** Butcher, part-time employee at Falu Meat

**Interviewer:** Fredrik, we'd like to start by asking if you knew Emma Strand or her family.

**Fredrik:** We live in the same neighborhood. I saw her around sometimes. Nothing more than that.

**Interviewer:** Your neighbors have reported seeing you near playgrounds where children often play. Would you care to explain your take on that?

**Fredrik:** Well, I like being outdoors. Maybe I passed by a few times, but there's nothing strange about it.

**Interviewer:** What were you doing on Friday, December 19, in the afternoon, around 2:30 PM?

**Fredrik:** That was weeks ago... let me think. I was probably at home. Or maybe out shopping, I don't really remember. It was just before Christmas, probably had lots going on.

**Interviewer:** Is there anyone who can confirm that you were at home?

**Fredrik:** No. I live alone. Nobody's keeping tabs on me.

**Interviewer:** Do you recall seeing Emma on the day she disappeared?

**Fredrik:** No, not really. She walked past my street often, but nothing out of the ordinary. I don't know what you expect me to say. I had nothing to do with this.

**Interviewer:** Several people have described you as unsettling. How do you respond to that?

**Fredrik:** People don't like me, that's the simple truth. I've never fit in, so they gossip. They make up stories because it's easy. I keep to myself, I do my job, and I don't care what they think.

**Interviewer:** Thank you Fredrik, we will be checking your statements. Is there anything else you'd like to add before we end?

**Fredrik:** No. Nothing else.



## Interview Report – Falun Police

**Case Number:** 5000-K417681-14

**Date:** January 7, 2015, 3:01 PM

**Interviewing Officer:** Detective Inspector Mats Ekman

### Details of Interviewee:

**Name:** Carina Rydell

**Address:** Bergsgränden 14, 791 00 Falun

**Date of Birth:** February 22, 1978

**Marital Status:** Single

**Children:** Daughter Ida, 9 years old (classmate of Emma)

**Occupation:** Employee, Falun Cinema

**Interviewer:** Carina, we'd like to speak with you since we understand you sometimes spent time with Julia Strand and her family. Could you tell us a bit about your relationship with Julia, and how you knew Emma?

**Carina:** Yes, of course. Julia is a friend, we both have daughters the same age. What happened is just terrible! Who could have imagined it? Emma was the kind of girl everyone liked.

**Interviewer:** We've heard that you sometimes expressed frustration or even jealousy toward Emma. How do you respond to that?

**Carina:** What? Well... yes, maybe at times. Emma's father is very wealthy, and she got everything she wanted from him. Meanwhile, I'm a single mother struggling to make sure my daughter doesn't have holes in her shoes. It's hard to watch, even if you want to be happy for others. My daughter always wanted the same things Emma had, but I simply couldn't provide them. So yes, maybe I said some things in frustration. But that doesn't mean I ever wished harm on Emma. Never!

**Interviewer:** Understood. Where were you on Friday, December 19, around 2:30 PM, the approximate time Emma disappeared?

**Carina:** I'm pretty sure I was at work then. I should have been on shift that day. It should show in our staff login system, we use [staff.faluncinema.com](http://staff.faluncinema.com).

**Interviewer:** Thank you, we'll take a look. How often would you say you and Julia spent time together?

**Carina:** Every now and then. Since our daughters were in the same class, we naturally met at drop-off and pick-up. Sometimes we had coffee or chatted outside the school.

**Interviewer:** I see. Thank you, Carina. We'll be in touch if we have any further questions.



**Date:** 2012-03-10

**Case No.:** 128

**Reference No.:** K-147812-12

## Case

Report concerning inappropriate conduct, Christoffer Westin (primary school teacher)

## Background

On February 14, 2012, the Uppsala County Police Authority received a report from the guardian of a student at Uppsala Primary School. The report concerned suspected inappropriate approaches made by teacher Christoffer Westin toward a student in grade 4.

## Investigation

Interviews were conducted with the student in question, the guardian, and Christoffer Westin. Several other students were also heard. Statements indicate that Westin on multiple occasions spent time in close proximity to certain students in a way that was perceived as uncomfortable. However, the investigation could not establish that any criminal act had taken place.

## Assessment

There is insufficient evidence to pursue prosecution. The case will therefore be closed.

## Decision

The preliminary investigation is discontinued. No further action will be taken.

Decision made by



Criminal Inspector  
Uppsala Police Authority

Reviewed by



Supervising Officer, Police Inspector  
Uppsala Police Authority



## Interview Report – Falun Police

**Case Number:** 5000-K417681-14

**Date:** January 8, 2015, 08:56 AM

**Interviewing Officer:** Detective Inspector Mats Ekman

### Details of Interviewee:

**Name:** Christoffer Westin

**Address:** Granitvägen 7, 791 42 Falun

**Date of Birth:** November 3, 1981

**Marital Status:** Single, lives alone

**Children:** None

**Occupation:** Teacher, Falu Elementary School

**Interviewer:** Christoffer, we're here to talk a bit about your background. Our records include a previous report from your time in Uppsala regarding inappropriate behavior toward students. Would you like to comment on that?

**Christoffer:** Oh for God's sake, that was years ago. It was based on false claims, and the whole case was dropped.

**Interviewer:** I understand, but my job is to ask questions from every angle. We need to examine all leads, even those connected to your past.

**Christoffer:** I had nothing to do with this. It's insane that you'd even consider me a suspect.

**Interviewer:** Where were you on Friday, December 19, around 2:30 PM?

**Christoffer:** It's hard to say exactly what I was doing more than two weeks ago. I don't write down my every move, and I never thought I'd be treated like a suspect over this. School days end around 2 PM, and sometimes I go home, sometimes I stay for after-school activities. I can't remember what I did that particular day.

**Interviewer:** Did you have any contact with the Strand family outside of school?

**Christoffer:** No, only formally at parent meetings and such. I had no private relationship with them.

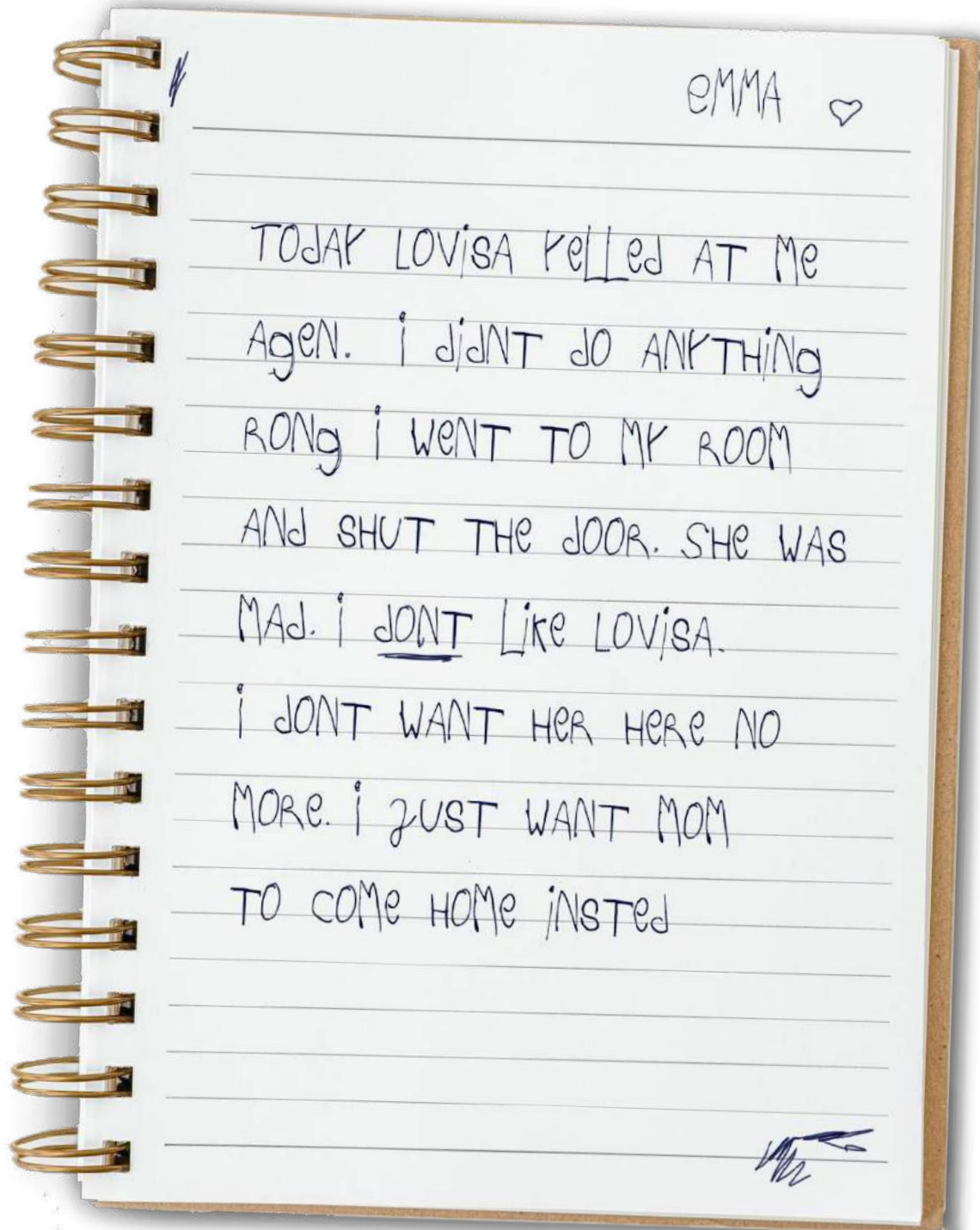
**Interviewer:** How would you describe your relationship with Emma at school?

**Christoffer:** I'm head teacher for grade 4, but I also teach some lessons in grade 3. Emma was in grade 3. She was a happy, capable student, nothing unusual stood out. I treated her like any other pupil.

**Interviewer:** Thank you. Is there anything else you'd like to add before we finish?

**Christoffer:** No. I just want to get back to work.

**Interviewer:** Thank you, Christoffer. We'll be in touch if we need more information.



# MEDICAL RECORD

**Patient:** Lovisa Lundqvist

**Phone nr:** 023-999 204

**Date of Birth:** 1989-12-14

**Date:** 2014-12-03

**Responsible Physician:** Dr. Katryna Nowak

## Background:

The patient, 25 years old, has a history of psychiatric care with diagnoses including depression and delusional symptoms. Initiated on medication in June 2014.

## Status:

The patient shows some improvement regarding depressive symptoms, but persistent features of delusions and episodes of irritability remain. Sleep disturbances continue, as reported by the patient. She describes anxiety and difficulties in social interactions, particularly when placed in situations of responsibility for others.

## Planering:

Continue medication as prescribed.

Follow-up scheduled within six weeks.

Ongoing evaluation of treatment response.

Continued supportive psychotherapy recommended.

## Signature:

*Dr. Katryna Nowak*

**Dr. Katryna Nowak**

Specialist in Psychiatry



Dalarna Psychiatric Center, Falun Outpatient Clinic



### Interview Report – Falun Police

**Case Number:** 5000-K417681-14

**Date:** January 9, 2015, 8:42 AM

**Interviewing Officer:** Detective Inspector Mats Ekman

#### Details of Interviewee:

**Name:** Lovisa Lundqvist

**Address:** Skogsbrynet 11, 791 32 Falun

**Date of Birth:** December 14, 1989

**Marital Status:** Single, lives alone

**Children:** None

**Occupation:** Various temporary jobs (including babysitting)

**Interviewer:** Lovisa, we'd like to talk with you about Emma. Did you often look after her?

**Lovisa:** Well, yeah. I often took care of her on the weeks that Emma stayed with her mother.

**Interviewer:** We are aware that you are receiving treatment for mental health issues. Julia never mentioned that. Did you keep that information from her?

**Lovisa:** ...Yes. I did. It's hard to find work when people know about things like that. If I had told her, she never would've let me babysit. I had to keep it quiet. I needed the money.

**Interviewer:** We've also reviewed some diary entries suggesting your relationship with Emma may have been tense at times. How would you describe it?

**Lovisa:** Our relationship was fine! But... sometimes she didn't listen. She could push my buttons when I was tired. I had to be firm with her, but it was for her own good.

**Interviewer:** What do you mean by "firm"?

**Lovisa:** Raising my voice, maybe scolding her. That's all. Nothing more.

**Interviewer:** How were you feeling during this period, in December?

**Lovisa:** Not very good, I guess. I wasn't sleeping well, and some days I felt really low. In November, I also lost my cat Marcellus. I'd had him since I was a child, and he meant everything to me... that didn't make things any easier. It's hard to describe how I feel... Sometimes it just feels like I can't trust anyone.

**Interviewer:** Do you remember where you were on Friday, December 19, in the afternoon?

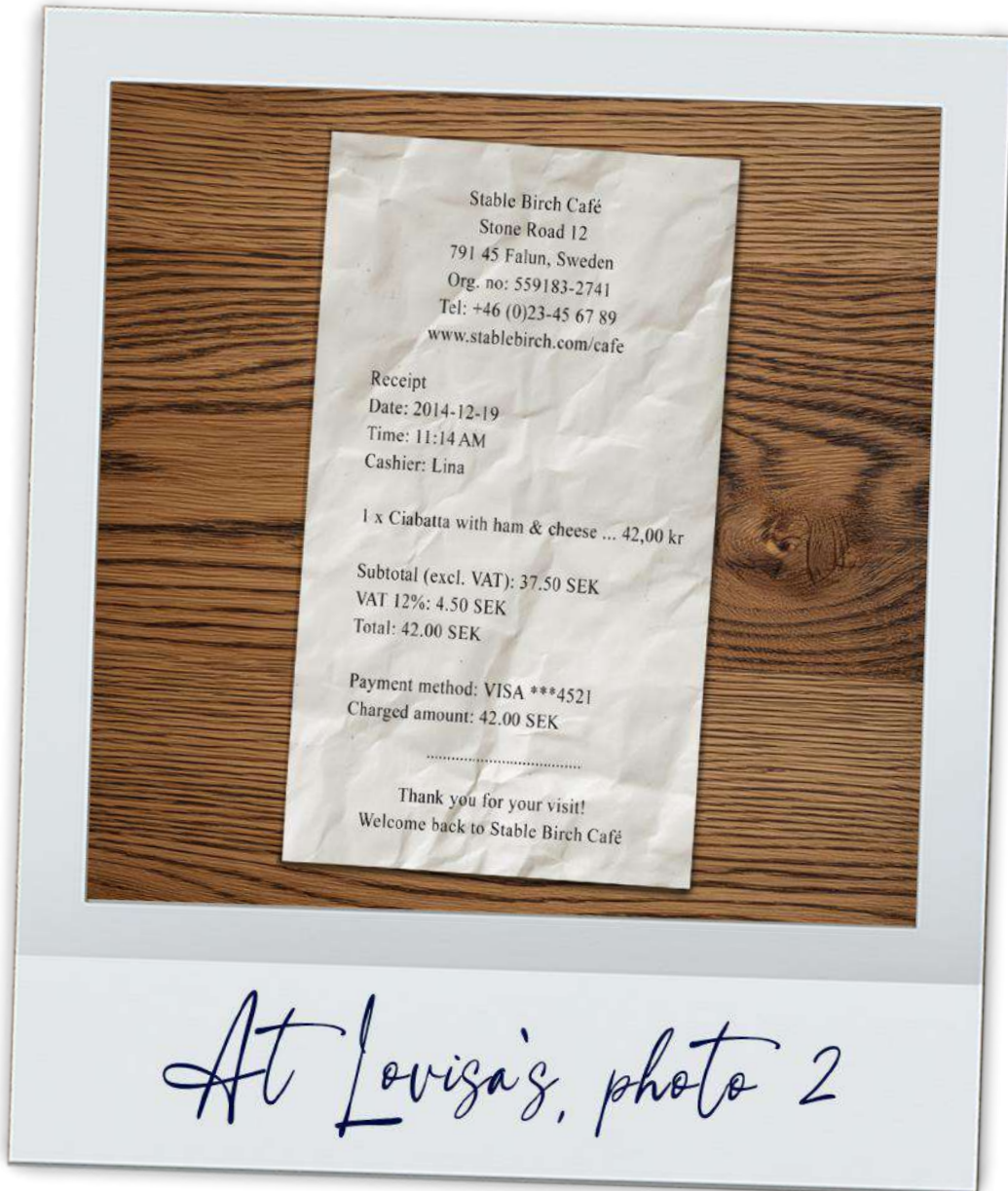
**Lovisa:** I really don't know. It was a long time ago. Maybe I was at the stables.

**Interviewer:** Is the stable nearby?

**Lovisa:** It's in Falun. Not far from anything in this small town, really.

**Interviewer:** Alright. Thank you, Lovisa. We'll be in touch if needed.

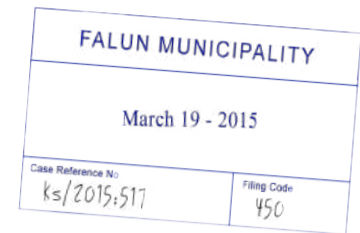




**Outstanding Debt Notice**

Date: March 15, 2015

To:  
Mikael Forsman  
Björkgatan 14  
791 00 Falun

**Subject: Debt Collection Demand on behalf of VikingPlay**

We are contacting you on behalf of our client, VikingPlay, who has transferred an outstanding claim to us for debt collection. According to our records, the debt relates to unpaid gaming transactions and withdrawal fees that have fallen due.

**Total Amount Due SEK 201,000.00****Due Date April 6, 2015**

*(Please note: if payment has not been received by this date, the matter will be referred for further legal action)*

As an alternative, payment may be made through an agreed installment plan. Please contact our customer service department to discuss available options.

**What happens if you do not pay?**

If the debt is not settled within the specified timeframe, our client may initiate legal proceedings. This could result in additional costs and a negative credit record. We therefore strongly urge you to contact us without delay in order to avoid unnecessary expenses.

**If you dispute the claim**

If you believe the debt is incorrect or wish to contest the demand, you must notify us in writing within 10 days of the date of this letter, stating the reasons for your objection and attaching any relevant documentation. Please contact us immediately in that case.

**Background (from the client)**

According to the client's records, the debt concerns gaming transactions carried out via VikingPlay's web platform during 2014, where payments were not completed. After repeated reminders, the case has been handed over to Rikskravet for collection.

Med vänlig hälsning,  
Rikskravet Debt Collection Agency



**Account Statement:** December 2014

**Account Holder:** Mikael Forsman

**Period Covered:** 2014-12-01 – 2014-12-31



Nordic Private Bank

Date	Time	Description	Reference	Amount (SEK)
2014-12-03	20:11	VikingPlay Ltd (VP-12045)	TRX20141203-12045	-35 000,00
2014-12-07	11:51	VikingPlay Ltd (VP-12101)	TRX20141207-12101	-22 000,00
2014-12-12	16:45	VikingPlay Ltd (VP-12288)	TRX20141212-12288	-28 000,00
2014-12-12	17:53	VikingPlay Ltd (VP-12288)	TRX20141212-12288	-30 000,00
2014-12-16	22:05	VikingPlay Ltd (VP-12419)	TRX20141216-12419	-18 000,00
2014-12-19	14:15	VikingPlay Ltd (VP-12502)	TRX20141219-12502	-30 000,00
2014-12-19	14:36	VikingPlay Ltd (VP-12503)	TRX20141219-12503	-23 000,00
2014-12-22	09:10	VikingPlay Ltd (VP-12601)	TRX20141222-12601	-15 000,00

# POLICE REPORT



**Case:** Discovery Site – Suspected Holding Location

**Case Number:** 5000-K417681-14

**Report Date:** February 15, 2015

**Location:** Woodland area, concealed shed near Falu Elementary School, Falun, Dalarna County

**Reporting Officer:** Detective Inspector Mats Ekman, Falun Police

## Addition to Police Report:

During a search of a concealed shed in the woodland area, discovered by two civilians while out hiking, the following items were recovered. Based on the findings, there is reason to suspect that Emma Strand may have been held in the shed during the period between her disappearance and her death.

## Significant items recovered inside the shed:

- ➔ Emma's winter jacket, found lying on the floor.
- ➔ A glove, confirmed by the family to belong to Emma.
- ➔ Fine, light-colored hairs (assessed as too short to belong to Emma).
- ➔ A knife. No visible traces of blood or tissue were detected; the item is not believed to have been used to inflict injury.
- ➔ Empty food packaging (bread, cold cuts, juice carton).
- ➔ Remnants of rope/twine.
- ➔ An empty cigarette pack.
- ➔ Old newspaper sheets.
- ➔ Footprints in the dust on the floor, too contaminated to be preserved or analyzed.

All items were documented. Samples were submitted to the National Forensic Centre. Technical analysis revealed no identifiable traces from any individual other than Emma (DNA confirmed).



*Discovery Site*



*Item 1 - Emma's jacket*



*Item 2 - Emma's gloves*



*Item 3 - knife*



*Item 4 - rope remnants*



*Item 5 - cigarette pack*